







10 Hampden Street Bishophill

York, YO1 6EA

£1,200 PCM

 2  1  1  D

AVAILABLE NOW - Just been re-decorated and new carpets fitted

This stunning recently renovated two bedroom mid-terrace house located in the sought after location of Bishophill and within close proximity of the city centre and the all local amenities.

The property comprises an entrance foyer which opens up to the lovely well presented open-plan lounge and dining area and kitchen with fridge freezer, washing machine and integrated oven and hob and overlooks the courtyard at the rear. This leads onto the bathroom with bath and shower.

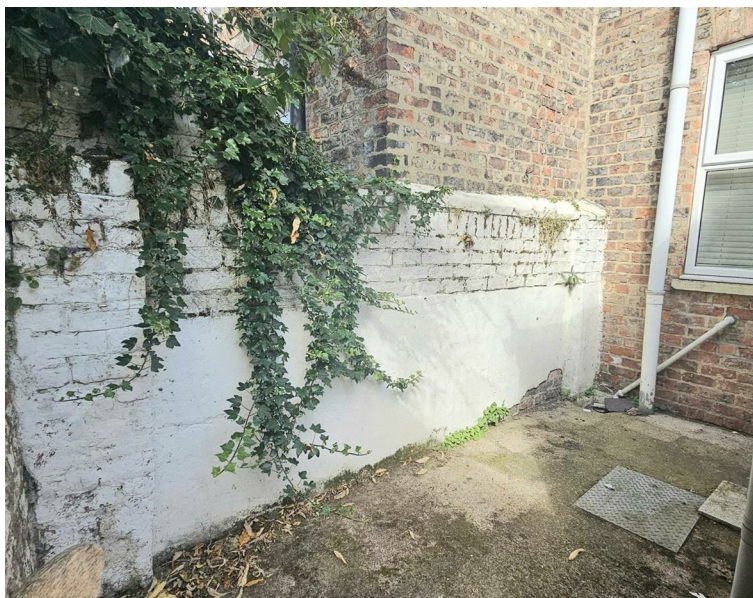
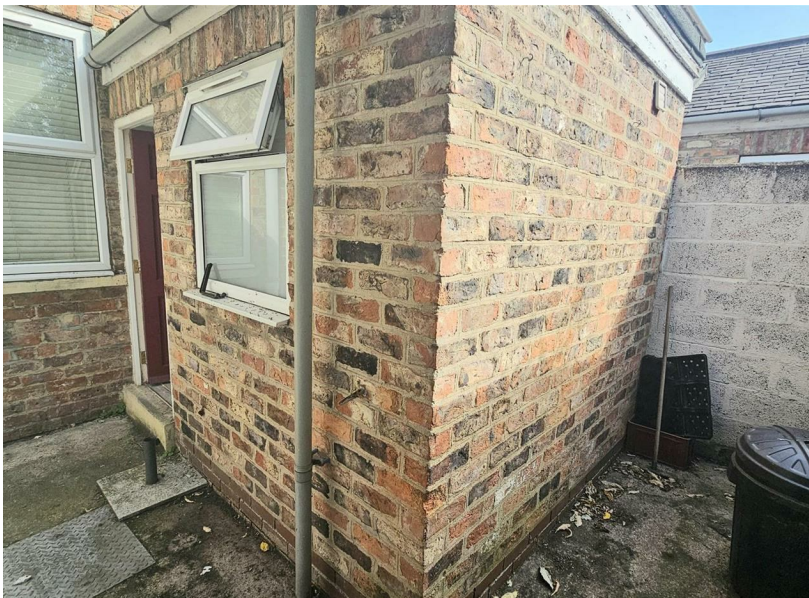
As you proceed up the stairs you are greeted by two large double bedrooms.

Pets permitted on a case by case basis.

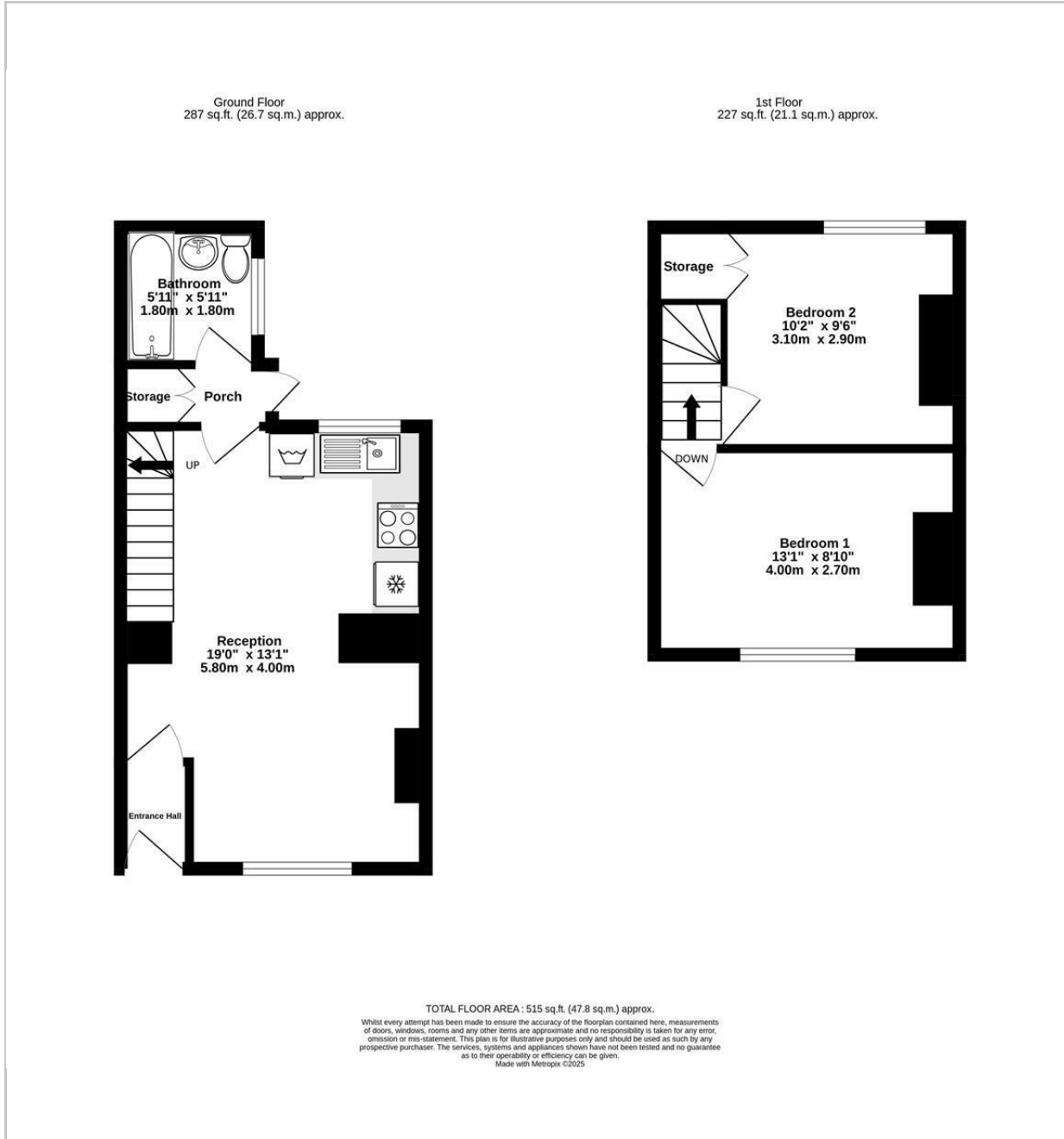
Sorry no smokers.

EPC - D
COUNCIL TAX - C

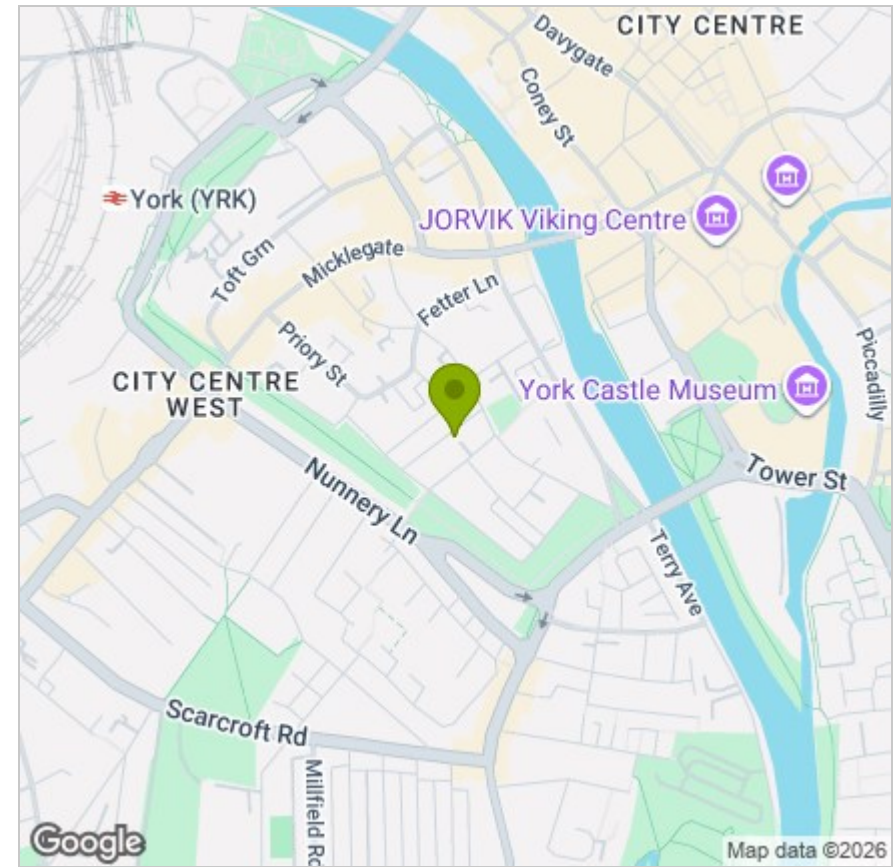




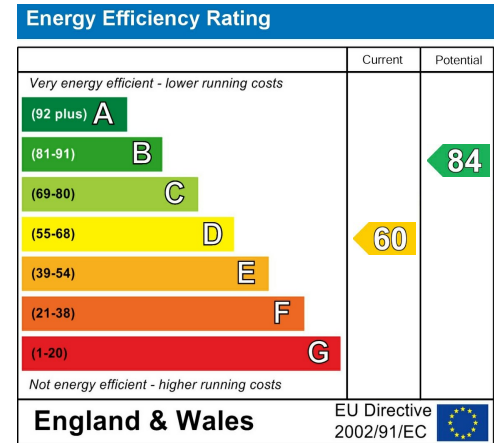
FLOOR PLAN



LOCATION



EPC



These particulars, whilst believed to be accurate are set out as a general outline only for guidance and do not constitute any part of an offer or contract. Intending purchasers should not rely on them as statements of representation of fact, but must satisfy themselves by inspection or otherwise as to their accuracy. No person in this firm's employment has the authority to make or give any representation or warranty in respect of the property.